

craft express

craft express

ELITE SUBLIMATION OVEN

25L

USER MANUAL



CE-KX25BL

STRUCTURE

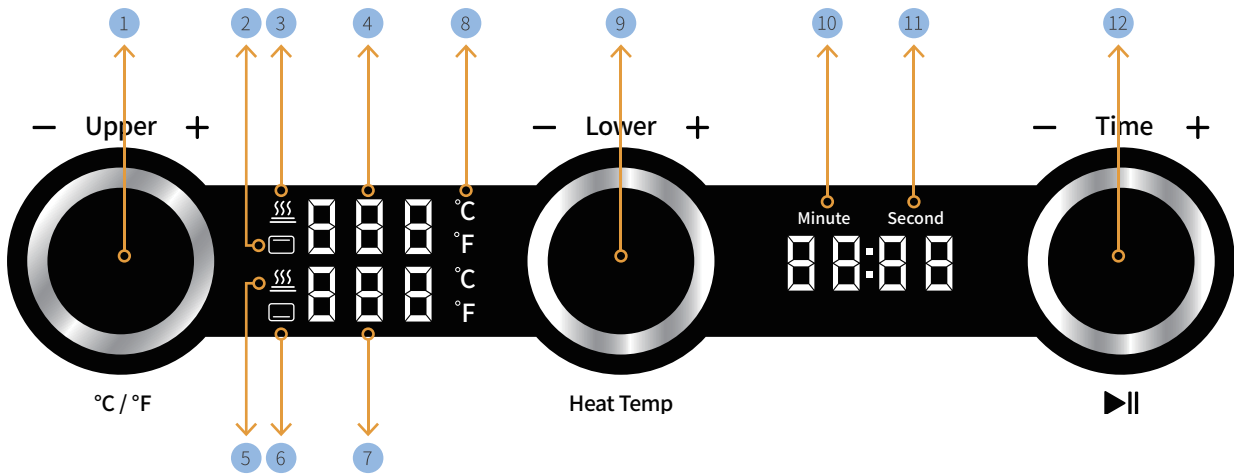
Items Included:

Sublimation Oven X1
Tray X1

Item Number	CE-KX25BL
Capacity	25L
Time Range	1-60min
Temp. Range	0-446 °F (0-230°C)
Voltage	230/110V 50~60Hz
Power	1600W
Temp. Range	0-446 °F (0-230°C)
Heating Tube	4



KNOW THE CONTROL PANEL



- 1 Upper Tube Knob / Temp. Button

2 Upper Tube Heating Indicator

3 Upper Tube Indicator

4 Upper Tube Temp.

5 Lower Tube Heating Indicator

6 Lower Tube Indicator
- 7 Lower Tube Temp.

8 Temp. Unit

9 Lower Tube Knob

10 Minute

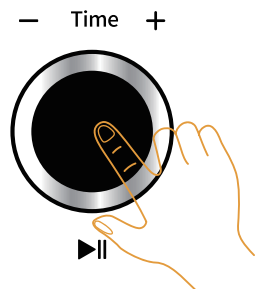
11 Second

12 Time Knob / Switch Button

HOW TO USE THE CONTROL PANEL?

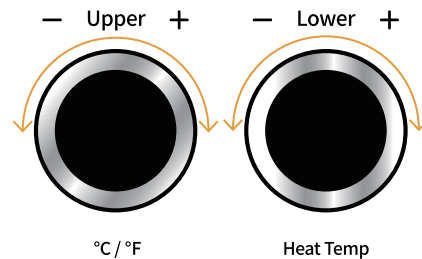
1. Switch on / off

- Long press time knob for 3 secs to switch on;
- Long press time knob for 3 secs to switch off.



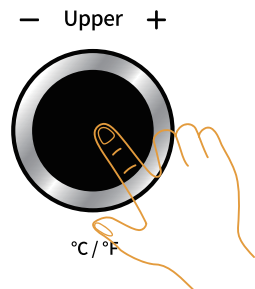
2. Set Temperature

- Turn the upper tube knob to adjust its temperature;
- Turn the lower tube knob to adjust its temperature;
- It is recommended to set the upper and lower tubes to the same temperature.



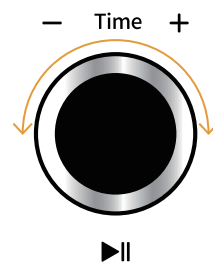
3. Switch Temp. Unit

- Long press upper tube knob for 3 secs to switch between °F and °C .



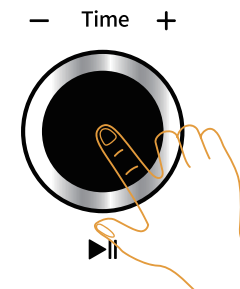
4. Set Time

- Turn the time knob to adjust printing time.



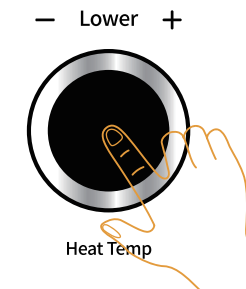
5. Start Heating

- After parameter setting, press the time knob to start heating;
- The heating indicator will be blinking during heating;
- The machine will beep to inform you as it reaches to the set temperature, and start counting down;
- It will beep again to inform you as the whole process is complete.



6. Check Current Temp.

- During heating, long press lower tube knob for 3 secs to check current temperature;
- Long press lower tube knob again for 3 secs to show the set temperature.



Note

- The machine records and displays the temperature you set last time when switched on.
- Press the time knob to stop the heating-up process.
- Press the time knob to stop the countdown process.
- The machine stops heating up after printing; press time knob to restart heating if you want to print more.

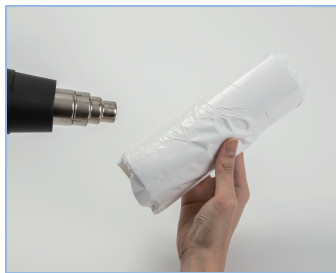
HOW TO PRINT A TUMBLER?



- 1 Remove the lid and other parts, and tape the image on the tumbler;



- 2 Wrap the tumbler with a suitable shrink film;



- 3 Use heat blower gun to shrink it and wrap the tumbler tightly;



- 4 Plug in the oven;



- 5 Long press time knob for 3 secs to switch on the oven;



- 6 Turn the three knobs to set time and temperature;



- 7 Press time knob to start heating;



- 8 The machine will beep as it reaches to the set temperature, and start counting down, pressing the time knob stopping counting down.



- 9 Put in the tumbler and close the door immediately, pressing the time knob and the machine begins to warm up to the set temperature and then start the countdown.



- 10 Take out the tumbler when the oven beeps after countdown finishes;



- 11 Peel off shrink film and paper, check the result;



- 12 Long press time knob for 3 secs to switch off the oven.



Safety Instructions

- Don't touch the back and bottom of the oven when it's still hot to avoid burns.
- Wear heat-resistant gloves.
- Please operate the oven under professional guidance.
- This machine is not intended for use by children.



Recommended Parameter

Product					
Product Name	30oz Skinny Tumbler	20oz Skinny Tumbler	17oz Cola Bottle	12oz Enamel Mug	64oz Dog Bowl
Quantity	1	1	1	1	1
Tool	Shrink Film	Shrink Film	Shrink Film	Silicone Wrap	Shrink Film
Temperature	185 °C / 365 °F	185 °C / 365 °F	185 °C / 365 °F	195 °C / 383 °F	185 °C / 365 °F
Time	6 min	6 min	6 min	6 min	8 min

Note

- a. All the data above are for Craft Express 25L Oven only.
- b. All the data above are based on the test results of Craft Express blanks and for reference only. Please test your own products and find the proper parameters.
- c. The required printing parameters vary for different materials, different sizes and numbers of blanks. Please test and adjust the parameters accordingly.

Product					
Product Name	15oz Glass Mason Jar	17oz Pint Glass	15oz Mug	11oz Mug	11oz Mug
Quantity	1	1	1	1	4
Tool	Shrink Film	Shrink Film	Silicone Wrap	Silicone Wrap	Silicone Wrap
Temperature	180 °C / 356 °F	180 °C / 356 °F	195 °C / 383 °F	200 °C / 392 °F	200 °C / 392 °F
Time	10 min	10 min	12 min	11 min	12 min

Note

- a. If the product comes with a lid, remove it before printing.
- b. If the product comes with parts that are not resistant to heat, remove them before printing. If the parts are irremovable, the product cannot be printed in oven.
- c. Please perform low temperature printing tests on plastic blanks.
- d. For glass blanks, wrap them with protective papers then shrink films, because the shrink films may stick on the surface after heating. Do not immerse the heated glass blanks in water to avoid cracks.

Following Tools Help Print Better

Additional purchase required



Shrink Film

- a. Produces proper pressure
- b. Flexible for handleless blanks in any shapes and sizes
- c. Available in various sizes
- d. Used with heat blower gun



Silicone Wrap

- a. Suitable for blanks with handles
- b. Easy to use
- c. Available in various sizes



Heat Shrink Bag

- a. Produces greater pressure
- b. For blanks with handles, it can extend the printable area to be closer to the handle
- c. Available in various sizes
- d. Used with vacuum sealing machine

Troubleshooting

Faint colors	The printing time is too short
Yellowish and vague print	The printing time is too long or the temperature is too high
When printing multiple blanks, the printed results vary in quality	The products are put too close together. They should be put at least 1cm apart and 1cm away from the oven wall



Other Safety Instructions

- a. To avoid electric shock, do not immerse the power cord, plug and other parts in water, and always unplug the oven when not in use.
- b. To ensure safety, make sure the oven is properly grounded.
- c. Never leave the oven unattended when in use.
- d. Never put flammable materials beside the oven, such as paper, cardboard, plastic, candle, etc.
- e. To avoid explosion, never put volatile and flammable materials into the oven.
- f. The oven needs at least 10cm clearance space on all sides and at least 30cm above for proper ventilation.

Warranty

- a. One-year warranty for the entire machine
- b. Free lifetime technical support